

End-to-End

The Parish Magazine of Rivenhall and Silver End



Chelmsford Cathedral had the Privilege of sharing this amazing art installation called Gaia. for most of October. The globe which rotates was assembled from pictures taken on board the international space station and was displayed in the nave. The magazine editor (P. Hope) was fortunate to get tickets before it was taken down and shipped to Norway. It is now at Trinity Church in Leeds.

December

2022

50p

The Following are our services For December 2022

4th December

9.30 am St Francis

11 am St Mary's

2nd Sunday of Advent

Holy Communion

All Age Worship

11th December

9.30 am St Francis

11 am St Mary's

3rd Sunday of Advent

Morning Prayer

Holy Communion

18th December

9.30 am St Francis

11 am St Mary's

4th Sunday of Advent

Holy Communion

Parish Carol Service

24rd December

3 pm St Francis

4.30 pm St Mary's

Christmas Eve

Crib Service

Crib Service

25th December

11 am St Mary's

Christmas Day

Joint Service of Communion

1st January

New Years Day

No Services ?

Church Contacts

All Contact should be Via the Churchwardens

Churchwarden Ann Clarke

01376 514825

Churchwarden Peter Hope

01376 502605

Email phope02@gmail.com

Rivenhall Contact Carole McCarthy

01376 512781

Silver End Contact Ruth Aitken

01376 583846

Rivenhall Website

www.stmarysrivenhall.co.uk

St Francis Silver End Website

www.st-francis.org.uk/

Contact the Editor 07904 235101 or phope02@gmail.com

My dear friends,

On November 27th the Church Year begins once again. Advent Sunday. Our Church hangings and vestments are purple (in some churches are blue). Why? Because it's a time to pause and reflect. In the stillness of winter we hunker down, notice the trees stripped bare, their hidden shapes and structure revealed. In the chill clear nights we sense the vastness of heaven, and reflect on our place the Universe - what it is to be human. And wonder how it will all end, what's our direction of travel. In the past we'd have fasted too. There's solemn edge to Advent which we miss in the swirl of pre-Christmas parties, the gloriously pre-Christmas decorations, and all that pressure piling up our expectations to try to make the perfect Christmas. But Church is traditionally bare of decoration in Advent. An open space, space to pause and reflect before God. The purple colours of the Advent Church evoke the Lordship of God. And we cry, Kyrie eleison. Lord have mercy.

Advent is the hidden season of the Church. But marking Advent prepares us well for Christmas. We pause before the great Feast. We deepen our spiritual awareness and attentiveness. And yes, our expectation builds up as the days count down towards Christmas Day. We prepare ourselves, our souls, our spirit, in Advent till we can wait no more. And then the warmth and joy and colour of Christmas bursts upon us - outrageous, unexpected, long expected Christmas, with all its ruddy good humour. But may the grace of God still surprise us. This is what Advent helps prepare us for.

Yours faithfully, Rev. Jonathan

In the past I've kept an Advent Book to accompany me through Advent. You might find one of these helpful:

Paula Gooder "The Meaning is in the Waiting" is a companion for the weeks of Advent. Reflections open up the scriptures, considering why we need to wait, what it feels like to be someone who waits, what happens when we lose patience or hope, and why God might want us to get better at waiting.

Albert Holtz "From Holidays to Holidays" is a series of daily reflections by a Benedictine monk. Contemplating God in how people prepare for Christmas holidays. 'A long, loving look at the real,' as he puts it.

When I was at Greenbelt in the summer I bought Rachel Mann's
In the Bleak Midwinter to accompany me though Advent -
daily reflection on poems by Christine Rossetti.

Or maybe you have found something helpful you wish to
share.

**Some Thoughtful Words from our soon to be Team
Minister for the Villages of the Witham team Ministry
Rev. Jane Quinton**

HELLO... HO.. HO!

As this is the Christmas edition of 'End to End' I felt a seasonal
introduction might be appropriate from your new Team Vicar in the
Witham and Villages Team Ministry.

I hope this finds you all well, and looking forward to Christmas. I
know that Graham and I are especially excited this year knowing
that the new year will see us moving into the vicarage in Terling,
and getting to know everyone here in the villages.

Although I have had a couple of interim posts after serving my
curacy in Ongar, this will be my first full incumbency – and I can
honestly say this is where I feel God has called us to be.

Sometimes we have to be patient, but God is faithful and we can
always trust His perfect timing.

So, a little bit about your soon-to-be 'new neighbours'

Graham and I have been married for 31 years, having met at our
local tennis club – a 'love match' one could say! I have a younger
sister Juliet, married to Jeremy, with son Samuel and daughter
Abigail, and Graham has a brother Ian who is married to Kay.

Graham is an electrical engineer, whilst I left school and joined the
BBC, where I had various jobs including working in picture publicity
and drama production. After a couple of years in a sports
photographic agency I then joined my mum to run her ladies
boutique, moving on a few years later to run my dad's newsagents
with Graham. Having thought I could take things easy when dad
sold the shop, God had other ideas! And after completing 2 years at
Ridley College I was ordained in 2017.

A West Ham supporter since I could walk, I am also chaplain to the
West Ham ladies team.

There is much more to say, (but Peter wanted me to keep this brief!)
so for now we wish you all a blessed Christmas, and look forward to
catching up, face-to-face, and getting to know you all properly, soon!

With love and prayers

Rev Jane x

Readings and Collects for December 2022

4th December 2nd Sunday of Advent

All Age Worship

Isaiah 11:1-10

Romans 15:4-13

Mathew 3:1-12

Collect

Almighty God,
purify our hearts and minds,
that when your Son Jesus Christ comes again as
judge and saviour
we may be ready to receive him,
who is our Lord and our God.

11th December 3rd Sunday of Advent

Holy Communion

Readings

Isaiah 35:1-10

James 5:7-10

Mathew 11:2-11

Collect

God for whom we watch and wait,
you sent John the Baptist to prepare the way of your Son:
give us courage to speak the truth,
to hunger for justice,
and to suffer for the cause of right,
with Jesus Christ our Lord.

18th December 4th Sunday of Advent

Carol Service

Lessons

First Lesson

The Christmas Life' (Wendy Cope)

Bring in a tree, a young Norwegian spruce,
Bring hyacinths that rooted in the cold.
Bring winter jasmine as its buds unfold -

Bring the Christmas life into this house.

Bring red and green and gold, bring things that shine,
Bring candlesticks and music, food and wine.
Bring in your memories of Christmas past.
Bring in your tears for all that you have lost.

Bring in the shepherd boy, the ox and ass,
Bring in the stillness of an icy night,
Bring in the birth, of hope and love and light.
Bring the Christmas life into this house.

Second Lesson

Isaiah 9: 2, 6-7

Third Lesson

Luke 1: 26-37

Fourth Lesson

Luke 2:1-7

Fifth Lesson

Luke 2: 8-14

Sixth Lesson

Thinking of Christmas Will Lamb

In his Christmas day sermon of 1611 Launcelot Andrews described the word made flesh as 'the Word of an infant, the Word who was not yet able to speak a word.' The gospel captures the paradox and the mystery that God speaks to us through our humanity. God speaks even in the inarticulate, incomprehensible and persistent cry of a child.

Any parent will be able to identify the arresting and startling cry of a child. We can do nothing but listen. Such cries are designed to hold our attention. They demand our patience, all our concentration. Looking into a little scarlet face and screaming mouth, we are confronted with something strange and uncontrollable. And that's the point. The Incarnation of Christ confronts us with the startling, mysterious, and shattering strangeness of God.

That is the kind of Word which God speaks to us. It is a Word disclosed in the strangest of places, a place of deep and real need, among the homeless, the vulnerable, the hungry, refugees and asylum seekers. God's true Wisdom is made known to us not as someone who does not need our help, but as a helpless child who reaches out to us. As Jesus will say later in a parable to his disciples, 'I was hungry and you gave me food, I was thirsty and you gave me something to drink, I was a stranger and you welcomed me, I was naked and you gave me clothing, I was sick and you took care of me, I was in prison and you visited me.'

This Christmas, as we reflect on the mystery of God incarnate we

remember that God comes alongside those who find themselves in the strangest of places, places of deep and real need, and invites us to go and do likewise.

Rev Will Lamb, formerly of Sheffield Cathedral (edited)

Seventh Lesson

John 1: 1-14

unfolds the mystery of the incarnation

Collect

Eternal God,
as Mary waited for the birth of your Son,
so we wait for his coming in glory;
bring us through the birth pangs of this present age
to see, with her, our great salvation
in Jesus Christ our Lord.

25th December Christmas Day

Holy Communion

Readings

Isaiah 52:7-10

Hebrews 1:1-4 (5-12)

John 1:1-14

Collect

Eternal God,
in the stillness of this night
you sent your almighty Word
to pierce the world's darkness with the light of salvation:
give to the earth the peace that we long for
and fill our hearts with the joy of heaven
through our Saviour, Jesus Christ.

The 50/50 Club November 2022 winners

1st Mrs Wood

2nd Mrs Rowe

3rd Mr Paton

Witham Mothers' Union

8th December in St. Nicolas church hall at 2p.m.

Christmas Quiz and Entertainment by Diane Clifford-Smith-(an exotic dancer)

With 'A Bring and Share Tea.'

At this event there will be a Bring & Buy table, in aid of 'English for Women.'

RIVENHALL PARISH COUNCIL

Notes of meeting held on 1ST November 2022 at Rivenhall Village Hall.

These notes are an abridged version of the minutes

Present: Cllrs. Abbott (Chairman), Wright (Vice-Chairman), A'Lee, Cairns, Elliott, Prime and Turner.

Also present: Parish Clerk, ECC Cllr. Playle (arrived late), 1 member of the public.

Chairman's Report

The Development Consent Order (DCO) planning process for the A12 widening project is now well underway with the deadline for registering to take part being midnight 4th November. The Parish Council has registered to take part and also recently organised a meeting for those local residents most closely affected by the current A12 and the proposed bypass route south of Rivenhall End. This was held on 24th October and we are grateful for representatives from the A12 Project Team attending to assist residents with information. There have also been briefing meetings for local councillors held recently by both the A12 Project Team and Essex County Council (ECC). At the ECC briefing, they put forward suggested "alternative" uses for the "old" de-trunked section of the A12 through Rivenhall End which are very different to the proposals that are going forward in the DCO. These involve reducing the "old road" to 2 lanes and digging up the other 2 lanes to leave to rewild.

Clarification is being sought from ECC as to whether they are going to pursue their alternative plans through the DCO process and also requesting that they work with the local community on this highly important matter for the future of Rivenhall parish.

Public Forum

A resident asked about when the dysfunctional streetlights on Rickstones Road were going to be repaired. The Chairman advised that those and all of the streetlights that were not working in the parish had been reported, some multiple times. **(Post meeting note:** An audit carried out by the Chairman in November revealed 38 streetlights not working (including one where the column is missing).

When ECC Cllr. Playle arrived he reported on various Highway issues relevant to Rivenhall and was asked about potholes and dysfunctional streetlights. He was also informed of the poor condition of some local footways, particularly along Rickstones Road and the faded road surface markings at the Railway Bridge on Oak Road.

Matters for Discussion

Braxted Road Commodity Centre - possible further expansion

The Clerk will contact Maldon District Council requesting to be kept informed should any new planning applications be received regarding the Commodity Centre, explaining RPC's concern regarding potential increase in HGV traffic from the A12 via Braxted Road and Appleford Bridge. Great Braxted Parish Council also to be requested to inform RPC should any such applications be referred to them.

A12 Development Consent Order/A12 Detrunking

RPC is now registered to the A12 DCO process; and the following initial registration comments have been submitted. More details can be added as the process goes on and RPC will be asked if they wish to apply for Rule 6 status.

Initial comments submitted are:

For the new bypass section of the A12

Compensatory planting for trees lost to the development.

Minimising impacts of new street lighting on residents and the local environment.

How traffic will respond to the new A12 and local links, particularly HGVs using Braxted Road and Little Braxted Lane (and related impacts on river bridges) and how signage and other measures can ensure HGV problems are not made worse.

What will happen after the A12 development with land taken by the project for construction compounds and borrow pits.

Impacts from noise from a widened A12.

The relationship between the new bypass section of the A12 and Coleman's Quarry.

Impacts on residents and the environment of a larger Witham North A12 junction.

In respect of the "old" A12 (de-trunked section)

Ensuring that Oak Road is stopped up to traffic.

Pedestrian and cycling access including PRow and the proposed controlled crossing.

The reinstatement of a local bus service (bus drivers currently will not stop on the A12 due to safety issues) and the provision of new bus stops and shelters.

The 'roundabout to nowhere' proposed near the Fire HQ.

The "alternative" plans for the de-trunked section as put forward by Essex County Council – concerns re aspects of these plans but also are there opportunities for greater biodiversity gain.

RPC can request a grant from Designated Funds for projects related to matters arising from the A12 project. This will be discussed at the December RPC meeting.

The Clerk will contact both Witham TC and Kelvedon PC suggesting a joint meeting to discuss the ECC proposal for the A12 detrunking.

Essex County Council Minerals Plan

ECC has revised the end date of the Minerals Local Plan from 2029 to 2040 and a new call for sites will be required.

RPC website updating

Updating of the RPC website will be undertaken by Nebulas Website Design Ltd. as agreed with effect from December 2022.

Planting plaques

It **was agreed** that the wording on the plaques should read "This tree and wildflower area was established by Rivenhall Parish Council to mark the 125th anniversary of the founding of Parish Councils (2019) and as part of Queen Elizabeth's Platinum Jubilee Green Canopy initiative (2022)", and that quotations be obtained.

3 Parishes

Silver End PC had advised that due to a reduced number of councillors, they are finding things difficult at the moment. It was

agreed that the Clerk write to the two Braxted Parish Councils inviting future liaison upon important local issues.

Highway Maintenance

- Quotations for the brickwork repair on the footway connecting St. Mary's Road and Church Road are still awaited.
- A representative from National Highways is hopeful of attending the RPC December meeting to discuss issues on the A12.
- The footway along Rickstones Road is, in parts, in very poor condition (and this has been again reported via the Essex Highways "Tell Us" on-line facility).
- The badly damaged BT Openreach cover on Rickstones Road that was first reported in April requires to be completely rebuilt (Post meeting note: this work has now been completed).
- The road surface lines at the Railway bridge on Oak Road require repainting. The Chairman advised this has been reported to ECC numerous times and again recently

General Maintenance

- An invoice has been forwarded to BDC in the agreed sum of £1,330 as grant towards refurbishment of the Village Green posts.
- The Chairman has applied for 30 free trees from the Woodland Trust for the replacements needed.
- BDC has approved the RPC rewilding scheme at the playing field and will liaise with RPC prior to full implementation.
- The verge wildflower enhancement licence application process has commenced.

Planning Applications

22/02086/HH: Single storey 4 bay cart lodge – Ford Farm House, Church Road.

A 'no comments' letter forwarded to BDC.

22/02672/HH: Single storey rear extension – Park Gate Farm House, Park Road.

A 'no comments' letter forwarded to BDC.

Planning results

22/00390/HH: Single storey three-bay garage, 321 Rickstones Road.

Permission refused by BDC.

22/02006/FUL: Classroom extension etc. – Rivenhall School.

Permission granted by BDC.

Appeals

A letter supporting BDC's decision to refuse the original application for Bellway Phase 4 has been submitted to the Planning Inspector. Details of the Appeal process are awaited. The Chairman will ask BDC if they can advise on those details.

Ongoing Planning Issues

A12 to A120 widening

Representatives for the DCO process attended a meeting with local residents on 24th October in Henry Dixon Hall to address local issues re the A12 widening.

BDC Local Plan

The BDC Housing Land Supply remains below 5 years, therefore planning applications may be subject to National Planning policies. This might affect the Bellway Phase 4 Appeal.

Braintree Local Highways Panel

The next meeting is scheduled for December 2022 with date and time to be agreed.

Finance matters

It was **agreed** that a grant be given:

£600 to Rivenhall & Silver End P.C.C. for the village magazine and to assist with the purchase of a new mower for maintenance of the churchyard.

Members were reminded that the Budget/Precept meeting is scheduled for Friday 16th December 2022 at Rivenhall Village Hall.

Dates of future meetings

6th December at Henry Dixon Hall and 3rd January 2023 at Rivenhall Village Hall, both starting at 7.30pm.

Christmas in Rivenhall 2022

CAROLS

**at St Mary's Church Rivenhall
Led by Rev. Jonathan Pritchard**

**Our Carol Service will be held at St
Mary's Church Rivenhall on
Sunday 18th of December at 11 am
come and get in the mood for Christmas!!**

Carols on the Green

**Tue 20 December ... 7:30 pm - Carols on the
green with the Chelmsford Silver Band (NOTE: to
be held in the Village Hall if inclement weather),
followed by:-**

**Tue 20 December ... Approx 8:15 pm - Free vil-
lage get-together in the Village Hall with season-
al tunes from the Chelmsford Silver Band. Free
mince pies, sausage rolls, mulled wine and fruit
juice, plus a wonderful raffle.**

24th of December Crib Services

**3 pm St Francis Silver End
4.30 pm St Mary's Rivenhall**

25th December Christmas Day

**11.00 am St Mary's Communion Service
led by Dr. Rev. J Pritchard**

ANGLIA TREE SERVICES

Specialist tree surgery

Residential & Commercial Customers

CROWN REDUCTION • FELLING • TOPPING

HEDGE TRIMMING • ALL GARDEN WORK

STUMP GRINDING

For a quick, tidy and friendly service call:

Tel: 01621 892831 Mob 07779
386388



7 DAYS A WEEK • EMERGENCY SERVICE AVAILABLE • FULLY INSURED



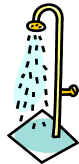
Philip Little

Property Maintenance Magician

Local service at local prices

Knowledgeable and friendly

07973 129808 or 01376 515257



Serving the Local Community for over 125 Years

G. COLLINS & SONS

Funeral Directors Ltd



30 RAYNE ROAD, BRAINTREE, CM7 2QH

01376 342266

4 THE STREET, WHITE NOTLEY, CM8 1RH

01376 583750

WWW.GCSFD.CO.UK

Beautiful Rooms For Rent In Witham & Braintree

We have 4 Lovely houses
2 in Witham—2 in Braintree
With and Without en-suites
£90—£130 per Week

(All inclusive of Rates, Light, Heat, and with Broadband)

See our Website:- www.jbwpartners.co.uk

Or Call John

Mavis

Michelle

07850 161629

07714 579783

07966 323914

**HELP WITH
FUNERAL ARRANGEMENTS
RICHARDS
FUNERAL SERVICE**



01376 513114

78 Newland Street, Witham, CM8 1AH

From advice on how to register a death to making all the arrangements, we're here 24 hours a day.

Members of the National Association of Funeral Directors
A British Owned Company www.dignityfuneral.co.uk

SpeedyBroadband.co.uk

***Sick Computers my
Speciality***

- Home Networking Problems Sorted Out
- Computer Viruses Removed
- Operating System Upgrades
- Upgrade to Windows 10

**FOR YOUR FREE SURVEY AND
QUOTATION CONTACT**

Peter Hope

Peter.hope@speedybroadband.co.uk

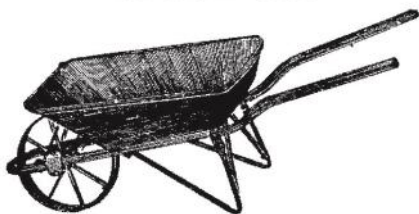
Tel: 01376 502605

Mob: 07904 235101

Website

www.speedybroadband.co.uk

**Ya Garden
Cares**



**Thorough Attention on
Bed Maintenance,
Mowing & Clearance**

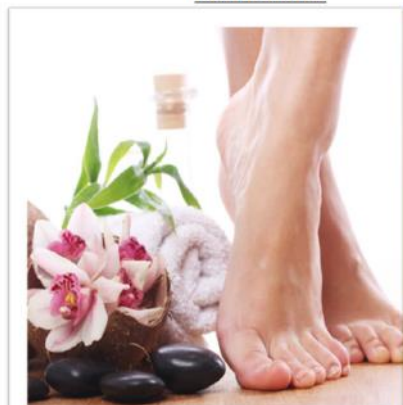
**Telephone
Barry: 07732337626**

FOOT HEALTH PRACTITIONER



THE SMAE INSTITUTE

HOME VISITS



**NAIL
TRIMMING**

CORNS

CALLUS

THICK NAILS

HARD SKIN

COVERING:

Chelmsford

Witham

Danbury

Stock.....

JAMES NEWMAN (MCFHP,MAFHP)

TELEPHONE: 01376 519036

MOBILE: 07793971351



Brookend
VETERINARY PRACTICE LTD

62 Braintree Rd Witham

**CARING FOR THE PETS OF WITHAM AND
THE SURROUNDING AREA FOR 25 YEARS**

SPECIAL O.A.P. SURGERY THURSDAYS

CAT ONLY CLINIC WEDNESDAYS

Late night surgery Wednesday till 8pm

**Surgery Opening hours
Monday to Saturday for**

Tel: 01376 500038

www.brookendvets.co.uk



PC Doctor
Operations Limited

**For all your computer
requirements including:**

Virus prevention, detection & removal
Broadband, Networking, Wireless & Firewall set up
Email & SPAM filtering
Hardware Repairs & Upgrades
Software Faults & Crashes
Backup Solutions & Data Recovery
Software Installation & Removal
Hardware & Software Supplied
Website Management • Computer Training

**Health
Checks
£39.99**

Office: 01621 891064 • Mobile: 07990 565336

Email: support@pcdocops.co.uk

Website: www.pcdocops.co.uk

Monthly subscription service available to provide complete "peace of mind" and allow you to spread the cost of your IT requirements.

Please contact for further information.

REYNOLDS CARPENTRY SERVICES

**For all Carpentry, Joinery
& Cabinet Making Requirements**

CSCS Registered

30 Years Experience

4 Years Apprenticeship

City & Guilds and

Advanced City & Guilds Qualified

Free estimates – No obligation

All building work considered

Can also make items to order

also

**'curtain poles, tiling, flat packs,
kitchens, doors, sheds etc, no jobs
too small'**

Contact

07889 110962

Answer phone at other times

Gaia Art Work (on the cover)

Gaia is a touring artwork by UK artist Luke Jerram. Measuring seven metres in diameter and created from 120dpi detailed NASA imagery of the Earth's surface the artwork provides the opportunity to see our planet, floating in three dimensions.

The installation aims to create a sense of the *Overview Effect*, which was first described by author Frank White in 1987. Common features of the experience for astronauts are a feeling of awe for the planet, a profound understanding of the interconnection of all life, and a renewed sense of responsibility for taking care of the environment.

The artwork also acts as a mirror to major events in society. In light of the COVID-19 pandemic, the artwork may provide the viewer with a new perspective of our place on the planet; a sense that societies of the Earth are all interconnected and that we have a responsibility toward one another. After the lockdown, there has been a renewed respect for nature.

When presented indoors, the Earth artwork slowly revolves. A specially made surround sound composition by BAFTA award winning Composer Dan Jones is played alongside the sculpture. In Greek Mythology Gaia is the personification of the Earth.

The artwork is 1.8 million times smaller than the real Earth with each centimetre of the internally lit sculpture describing 18km of the Earth's surface. By standing 211m away from the artwork, the public will be able to see the Earth as it appears from the moon.

Over its lifetime, *Gaia* will be presented in a number of different ways both indoors and outdoors. Depending on which country the artwork is presented in, and whether it is presented in a museum, science centre or parkland, the experience and interpretation of the artwork may alter. So far, wherever the artwork travels, it draws huge audiences. In 2019 at Liverpool Cathedral in just one month they saw 200,000 visitors.

Unlike the moon, which we have been gazing at for millennia, the first time humankind got to see the Earth in its entirety as a blue marble floating in space was in 1972 with NASA's Apollo 17 mission. At this moment, our perception and understanding of our planet changed forever. Hanging in the black emptiness of space the Earth seems isolated, a precious and fragile island of life. From a distance, the Earth is just a pale blue dot.

"I was amazed and delighted that my Museum of the Moon artwork has been so popular. I'm fully aware that 10 million members of the public haven't been coming to see an artwork by 'Luke Jerram' but rather 'the Moon'; an object of universal appeal and cultural significance. With this Gaia Earth artwork, I'm interested in just how different the experience and interpretation is. For our entire human existence we have been gazing up at the moon and projecting all our hopes, dreams and wishes up there. Whereas it was only in 1968 that we were able to see our planet floating as a blue marble in space"

"I hope visitors to Gaia get to see the Earth as if from space; an incredibly beautiful and precious place. An ecosystem we urgently need to look after – our only home. Halfway through the Earth's sixth mass extinction, we urgently need to wake up, and change our behaviour. We need to quickly make the changes necessary, to prevent run away." Quote from Luke Jerram

The Waverley Steam Ship by Margaret Martin

I have been on the Paddle Steamer Waverley for several different trips and as I am on their mailing list. I recently had their latest booklet delivered to me. I've been on most of their locally



advertised trips however I kept thinking how much I would like to see the Waverley again and make another trip.

On Wednesday 28th September (2022) the weather forecast was good so when Brian (my Husband) came home from his morning Cycle ride I asked if he would drive me to Witham Station where I caught a train to Clacton-on-Sea. The journey took about 45 minutes, which gave me a chance to look in the Charity shops before I walked to the pier with half an hour to spare before Waverley was due to berth. There were many people on the pier and the atmosphere was extremely friendly. About 20 people like me had come to take photos but many more were there to board the Steamer. I talked with several people exchanging memories of the ship and I felt quite emotional to see Waverley again.

As soon as all the people were on board I left the pier and walked in the direction of Jaywick, which enabled me to stay level with the ship almost as far as the Martello Tower. As I watched Waverley sail away getting smaller and smaller, I felt so thankful that I'd been able to see her again on her 75th anniversary year.

Sunshine Tart

After 12 years, this is my last recipe for the magazine, thank you for all your kind comments over the years. Ann

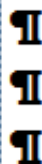


- Ingredients
- 320g packet ready-rolled puff pastry
- plain flour, for dusting
- 2 tbsp onion chutney or cranberry sauce
- 250g/9oz camembert (in a wooden box)
- 1 free-range egg, lightly beaten
- **4 Thyme sprigs, leaves picked (optional)**

Method

1. Preheat the oven to 220C/200C Fan/Gas 7. Line a large baking tray with baking paper.
2. Unroll the pastry onto a lightly floured work surface. Roll the pastry out to a slightly larger rectangle by about 5mm/¼in along both the length and width.
3. With the longest edge nearest you, spread the onion chutney over the bottom half of the pastry rectangle, leaving a 5mm/¼in border around the bottom and side edges. Fold the top half of the pastry over to make one long, thin rectangle of pastry. Cut the pastry into four equal rectangles.
4. Using a sharp knife, cut the first rectangle from the base up to the fold, stopping about 15mm/¾in from the fold, to create four long pastry 'fingers' attached together at the fold. Repeat with the remaining three pastry rectangles.
5. Remove the camembert from its wooden box and discard any wrapping. Put the bottom half of the box in the centre of the lined baking tray. Carefully pick up one of the cut pastry rectangles and place around the wooden box, moulding the folded end of the rectangle around the box. Repeat with the remaining pastry rectangles, overlapping the folded corners very slightly to make a continuous collar of pastry around the box. All of the pastry fingers should be spread out like sun beams.
6. Twist each finger a couple of times. Secure the end of a pastry twist with a fork then brush the beaten egg all over it. Repeat with the remaining twists. Sprinkle with the leaves from 1 thyme sprig, if using, then bake for 10 minutes.
7. Meanwhile, score the top of the camembert with a crisscross pattern and scatter a few thyme leaves, if using, over the top. Remove the pastry from the oven, put the camembert into the box and return to the oven for 15 minutes, or until the cheese is oozy and the pastry puffed and golden. Serve immediately.

Jeremy Larke Television services



Telephone: 01376 513645

Mobile: 07947 601619

Email: telerepair@aol.com

All Television Systems Catered
for Freesat, Freeview, Sky.

- Installations & Repairs To all makes and models
- Full Plasma & LCD Fitting Service
- Wall Mount Brackets Supplied and Fitted
- Aerial & Satellite Dishes Fitted
- Freeview, Freesat & European Channels
- View and Control Your Sky in Other Rooms
- Aerial and Telephone Extension Points Installed



Don't Delay Call Today

Janet C Davies

Dip. F.D. M.B.I.F.D

**BRAINTREE & KELEVEDON'S LADY FUNERAL
DIRECTOR**

Offering a full and Comprehensive Funeral Service

Telephone 01376 339300

For a Personal and Caring 24 hour service

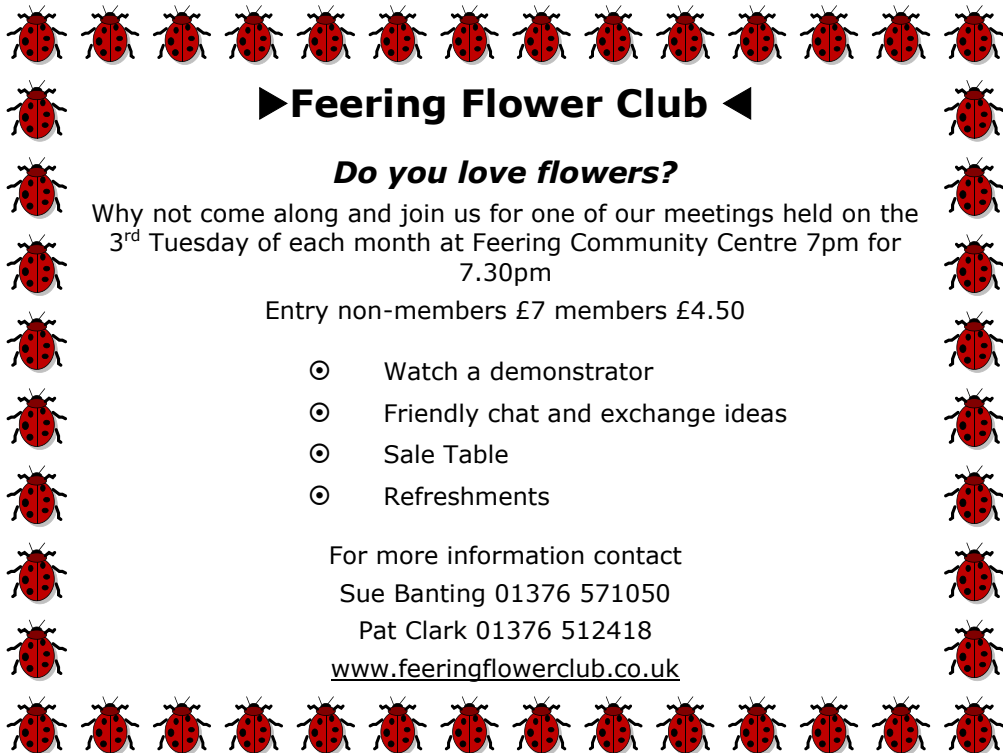
Local Chapel of Rest at Fern House 72 Coggeshall Road Braintree and
Victoria House, Trews Gardens, Kelvedon

Funerals are arranged and carried out in the Traditional Manner but
With 'The Gentle Touch'

Pre payment Plans available—Floral Tributes arranges—Woodland Burials
Bereavement Care—Low Cost Simplicity Funerals - Memorials—Printing
Catering—DWP Funerals

Part of the Hunnaball Family Group

Members of the National Association of Funeral Directors



►Feering Flower Club ◀

Do you love flowers?

Why not come along and join us for one of our meetings held on the 3rd Tuesday of each month at Feering Community Centre 7pm for 7.30pm

Entry non-members £7 members £4.50

- ⊙ Watch a demonstrator
- ⊙ Friendly chat and exchange ideas
- ⊙ Sale Table
- ⊙ Refreshments

For more information contact

Sue Banting 01376 571050

Pat Clark 01376 512418

www.feeringflowerclub.co.uk

DANIEL ROBINSON & SONS

Incorporating
W C BROWN & SONS

Independent Family Funeral Directors & Monumental Masons

A professional, caring, 24 hour service

Private Chapel of Rest

Fleet of air conditioned limousines

Horse drawn funerals available

Traditional and contemporary funeral services to suit your wishes

Funeral pre-payment plans

Arrangements may be made in the comfort of your own home, if preferred

Haslers Lane
Great Dunmow
Tel: (01371) 874518

7 Manor Street
Braintree
Tel: (01376) 320582

31 High Street
Halstead
Tel: (01787) 475533

www.drobinson.co.uk

COLEMANS COTTAGE FISHERIES

Lakeview Tearooms

Come and enjoy the view whilst
having a bite to eat



Open Thursday to Sunday 9am to 3pm
Breakfast, Lunches
Bar, Snacks
Afternoon Tea
Sunday Roast (01376 516383 to Book)

For more information go to:

<http://www.colemansfisheries.co.uk/witham/cafe/>

Colemans Cottage Fisheries

Little Braxted Ln, Witham CM8 3EX

FREE PARKING 01376 516383

Grow, Flourish. Succeed

Academy Nursery



Opening September 2022, we are
pleased to be offering a nursery
for children ages 2 years and up.

Each session will cost £10 (£20
for a full day)

Nursery sessions will in term time:

Mornings: 8.45am - 11.45am

Afternoons: 11.45am - 2.45pm

All Day: 8.45am - 2.45pm

If you would be interested in a
place, please email
[nurserysil@connectedlearningmat.
co.uk](mailto:nurserysil@connectedlearningmat.co.uk) with your child's name, date
of birth and the sessions and days
you require.

Aerial Photography

Barns

Chimneys

Roof Tops

COST EFFECTIVE, SAFE ACCESS,
ROOF TOP INSPECTIONS BY
DRONE WITH NO NEED FOR
SCAFFOLD, TEMPORARY WORK
OR STRUCTURES REQUIRED.



NON DISRUPTIVE, FAST AND
PROFESSIONAL SERVICE, SAME
DAY REPORTS AND
RECOMMENDATIONS FOR
REPAIRS

FULLY CAA AND CIOB
REGISTERED, QUALIFIED AND
INSURED SERVICE. CARRIED OUT
BY EXPERIENCED SURVEYORS.

Call to discuss your requirements;
Chris: 07817219133
Jim: 07966403783
email: highsightse@gmail.com

Historic Buildings Monitoring

Building Inspections

Estate Records

BURNS SUPPER

Saturday 4 February 2023

An Evening of Scottish Fare and Entertainment at

SILVER END VILLAGE HALL

The Broadway, Silver End CM8 3RQ

Tickets
£29



Live music with The Caledonian Reelers

and Caller Sue Last

Piping interlude

7.00pm for 7.15pm

Last dance 11.30, Carriages 11.45pm

Tickets available from Ann Kerr 01376 515437

Please bring your own drinks and glasses

In the event of cancellation by either party, there is a non refundable £5.00 deposit

Turning the pages of History

Research by Tracy Scott

As you have read before from me, that the Rivenhall Review often had competitions for young people to write stories etc., in the 1963 Christmas edition a young Wendy Webdale was chosen and this is her story for Christmas.

The Chinese Lanterns

Fern cupped her chin in her hands and rested her elbows on the window sill. She was feeling sorry for herself. It was time for the children to come home from school on the last day of term before the Christmas holiday. A big sigh shook her small shoulders like an electric shock as she heard a shout from the untidy boy who was always first past her house. Putting her lips near the window she breathed on the frosty glass to clear a patch to see through. The window was cold and wet and she flinched back like a frightened colt when her nose was touched. The frost made lovely delicate patterns on the glass, just like her name, Fern. The twirling, translucent tendrils engulfed the panes, but she was too cross to notice. Snow was what she had longed for; cold, crisp white snow, glittering snow which smelt and felt and looked like Christmas. She wanted to be like the old fashioned Christmas card scenes when ladies wore long flowing dresses and carried fur muffs, while the men were very handsome in their cloaks and tall hats.

A blonde curly lock fell against her cheek and she could have cried. She always came up to the cold attic when she wanted to escape her governess.

"Oh, stupid French and dead old Latin. I bet those boys and girls do much more exciting things than those at school," she thought.

In an effort to console herself she wondered what her parents would bring her from Hong Kong. They were often abroad, that was why she had to have a governess to look after her.

The tinkling laughter of children came closer and Fern quickly breathed on the window again. There was the scruffy boy making a slide on a frozen puddle, and oh, how funny he looked. He had fallen over and the peak of his bright blue cap was covering one ear and all the books from his tattered brown satchel had tumbled out. Not only were there books, but paintings and paper chains and again a sob tore at Fern's heart as she realised that they had been making Christmas decorations and drawing snowmen and Father

Christmases. Two girls were skipping along, arm in arm, the soles of their shoes going scuff-scuff, scuff-scuff, on the frosty pavement. More children came all happy and laughing, the boys wearing blue caps and the girls blue berets. There was a small dark girl in a red coat who reminded Fern of a pixie, and with her was Mary. She knew her name was Mary because she seemed to be favourite among the children and they were forever calling her name. She had a beautiful face, too lovely to be real and Fern was sure she was Mary, Jesus' mother, and that she had naturally taken that part in the school nativity play.

The window was freezing over again and Fern breathed on it, clearing a big patch, and peered out. The children were singing carols and suddenly Mary looked up and saw Fern and Mary shouted something at her. "Come and play with us", she invited. But Fern knew her governess, Miss Pringle was calling and plodded downstairs to tea.

Christmas Eve arrived and Fern was very excited about seeing her mother and father, who had been away for three long months. There they were, their car swooshed through the gateway and crunched up the frosty drive. Fern ran out to meet them and a few minutes later was tearing open parcels. String and wrapping paper were strewn everywhere. Miss Pringle surveyed the untidy scene disdainfully. Thank goodness she was going home that afternoon, she thought.

Among the treasures were six real Chinese Lanterns lit by batteries and balanced on intricately carved poles. There was an orange and black one, green and gold, blue, yellow, silver and red, and painted on them were spiky backed dragons with flames coming out of their mouths. Fern was thrilled at the sight of them.

That same afternoon there was a timid knock at the door. It was Mary and the scruffy boy, his face newly washed and shining. "Would your little girl like to come carol singing with us this evening?" They shyly enquired of Fern's mother. She said she thought it was a lovely idea and called Fern and told her. Fern was delighted. "And oh", she cried "Mummy, can we take the Chinese Lanterns?" "Of course you can", her mother replied. At exactly six o'clock over a dozen children called for Fern and walking in pairs, carrying the lanterns, they sang carols outside people's homes. They were often asked in and given hot spicy mince pies and people praised their singing. But Fern remembered best the very

old couple who invited them into their tiny kitchen and asked them to sing in front of the small log fire. As the fire light flickered on their faces they sang with their sweet child voices and Fern noticed the tears in the old lady's and the old man's eyes and knew that they had really loved their singing. She felt that they were the lady and man in her perfect picture of Christmas and tears filled her eyes too, and through her tears she looked out of the little kitchen window and saw a few flakes of snow floating past.

The End

Light for the Year ahead

In his 1939 Christmas Day broadcast to the Empire, soon after the outbreak of the Second World War, King George VI quoted these reassuring words, written by Minnie Louise Haskins in 1908:

"I said to the man who stood at the gate of the year: 'Give me light that I may tread safely into the unknown'. And he replied: 'Go out into the darkness and put your hand into the hand of God. That shall be to you better than light and safer than a known way.'"

From, Turning the pages of History, I wish you all the best for Christmas and your New Year bring you hope for the coming year.

Rivenhall Christmas Enlightenment

The Rivenhall Millennium Committee's Christmas calendar is:
-

Sat 10 December ... Erect the decorative Christmas Tree on Rivenhall green.

10 / 11 December ... Christmas cards delivered to every home in Rivenhall parish.

Sun 18 December ... From 3:30 pm, the musical, decorated Rivenhall Santa Sleigh will glide from Rivenhall Hall Farm to visit Rivenhall and Rivenhall End. The route is Church Road - St Mary's Road - Tusser Close - Beech Road - Rickstones Road - the Bluebell development - Rickstones Road - Oak Road - Browns Row - Foxmead - Foxden - Henry Dixon Road - Henry Dixon Hall. Santa's elves will be delivering Christmas gifts to families with a resident of 70+, and Santa

has sweets for all the children. **NOTE** - should the weather be very wet, Santa's sleigh will be postponed to a later date.

Tue 20 December ... 7:30 pm - Carols on the green with the Chelmsford Silver Band (NOTE: to be held in the Village Hall if inclement weather), followed by:-

Tue 20 December ... Approx 8:15 pm - Free village get-together in the Village Hall with seasonal tunes from the Chelmsford Silver Band. Free mince pies, sausage rolls, mulled wine and fruit juice, plus a wonderful raffle.

7 January ... Rivenhall Christmas Tree is taken down.

The 2022 Famous Rivenhall Races

In late October the Rivenhall Millennium Committee held its highly popular community race night in Rivenhall village hall. The committee was founded in early 1998 and this fund-raising race night began exactly twenty glorious years ago!

Race sponsors were Rivenhall's Darrin and Vicky of DRH Landscapes (two races) ~ they also very kindly funded five free race tickets and a table decoration, Rivenhall End's Phil Little - builder and property maintenance, the Rivenhall Playing Field Association (it runs our wonderful Rivenhall village hall), and Phil Jarvis - our local painter & decorator: so many thanks to them.

Our MC for the evening was Bob Turner, and running the tote were Jack Prime and young Wilson Kerr. There were eight races during the evening and the amusing "seaside humour" race-card was once again produced by John Macrae who also introduced each race. Four races were run before we consumed our eagerly awaited, delicious suppers (all supplied and timely delivered by Cod Father from Silver End).

Carole McCarthy worked stealthily all evening, up-ending everyone's wallets and purses in selling tickets for the exceedingly fine race night raffle. Also with us were Lilian Pearce and Joan Cain - so the Rivenhall Millennium Committee was still at full force after nearly 25 charitable years bringing comfort, enjoyment, and laughter to our village.

The final race was the Chairman's Choice Cup - this is now clearly

regarded as an international classic, in which, following the tote betting, Bob auctioned the eight prestigious runners. Bidders were extremely generous, and as always, the winning owners would receive half the auction money. That race was run with much calling, cheering and ultimately raucous shouting from the boisterous Rivenhall grandstand. It was horse number eight that won the race: Rivenhall's Essex County Councillor Ross Playle proudly presented £120 to the successful owners (Pam Newall and Phil Little) - most generously, they donated half their prize money back to the committee's funds.

Profits from this incredibly enjoyable evening fund the Rivenhall Millennium Committee's village events throughout the year, Enormous thanks go to all involved who came along and make this evening the best ever- a truly great crowd of those who actually care about our wonderful village community.

End to End Nature Care.

Without wishing to court controversy in the Parish Magazine, it is no coincidence that the shortest day of the year (i.e. 21st December: the northern hemisphere winter solstice) approaches almost simultaneously with Christmas. The solstice was very well known to pre-Christian civilisation and widely celebrated, marking as it does the tipping point towards longer, warmer days and more plentiful, fresh food. The festivities of Christmas are effectively the "christianisation" of those celebrations, established in late Roman times, with the birthdate of Jesus rather arbitrarily shoe-horned in.

In modern times, at least in the northern hemisphere and particularly in the temperate latitudes, it provides the advantage that there is something to celebrate whether one has Christian beliefs or not, and we can all endeavour to enjoy a little cheer together. Heaven knows we need it after the last couple of years. To that end, we hold a **pre-Christmas Winter social evening** being held this year on **Wednesday 14th December at "Fiddlesticks", 44 Strawberry Lane, Tolleshunt Knights** (postcode CO5 0RX). Starting 7:30pm for 8pm it is very informal and all are very welcome, there is no charge but those attending are asked to bring nibbles and/or something to drink for a

communal buffet.

The recent Science & Nature quiz night was huge fun, with resident quizmaster Andrew Moss producing another great mixed bag of formats, from straight Q&A to the "Just Connect" style missing-vowels round and the devilish "True/False/No Answer" where a correct answer scores two points but an incorrect answer is minus one, and the No Answer option gives the option to pass and accept no score; I can assure you it leads to much self-doubt and wringing of hands.

Our evening meetings for the early part of 2023 are now taking shape. On **Wednesday 18th January** we will be having the long-awaited second talk by **Essex historic maps expert Peter Walker**. Following the first talk he gave in March 2019, where he spoke about the early history of surveying and map-making in Essex, Peter will be taking 1805 as his starting point and no doubt speaking extensively on the establishment and operation of the Ordnance Survey, all with a distinctly local focus (as anybody present at the first talk will attest).

On **Wednesday 15th March** we will be visited by **Dougal Urquhart** who will be giving a talk about the **Red Squirrels of Mersea Island**. Some may know Dougal as the former long-serving ranger at Cudmore Grove country park on Mersea (he also covered Chalkney Wood near Earls Colne) but he is also currently president of the Colchester Natural History Society, an eminent birder and moth expert, and an all-round nice bloke. He also maintains an interesting blog observing the wildlife of his local patch (<http://merseawildlife.blogspot.com>) which is worth a look, especially if you are planning a visit to the island.

Both of these meetings will be at **8pm at Silver End Congregational Church**, Silver Street (postcode CM8 3QF) and as usual there is a small inflation-free fee of £2 per head to cover costs but that does include a hot drink and biscuits. There will also be a meeting on Wednesday 15th February, but the speaker for that date has yet to be confirmed.

Details of all our activities – and don't forget we are always offering free bird and bat boxes to anybody local - can be found on our website: www.e2e.silverend.org. We also have a Facebook group (End to End Nature Care) where anybody is welcome to post images or details of local observations of fauna and flora. I can always be contacted on simon@e2e.silverend.org or 07947 388180 if anyone

has any interesting local reports or questions about natural history, or if you would like to enquire about a bird or bat box. I also offer free advice for anybody scratching their head about a suitable Christmas gift for the budding naturalist in your family. Merry Christmas (and/or Winter Solstice)!

Simon Taylor

Sky Notes for December

The Winter Solstice will be on December 21st, at just before 10pm. The evenings by then will have already started to draw out slightly, but the shortest morning is a week or so later.

This month marks the 50th anniversary of the last Apollo Moon landing. Apollo 17 was launched on 7th December 1972 and one of the highlights of the mission was the astronauts finding what they thought was orange coloured soil. On analysis back on Earth it was found to be tiny beads of glass from a volcanic eruption on the Moon 3.5 billion years ago.

NASA has just returned to the Moon with the Artemis programme. The first mission is uncrewed and will test systems before what is planned to be the first of several crewed flights to the Moon this decade.

Mars reaches opposition on the night of 7th/8th December in the constellation of Taurus and as well as being at its brightest for 2 years, early on the 8th December, the Full Moon will pass over Mars. This event begins just before 5am and Mars will take about 30 seconds to fade as the Moon passes between us and Red Planet. Mars will reappear from behind the Moon just before 6am.

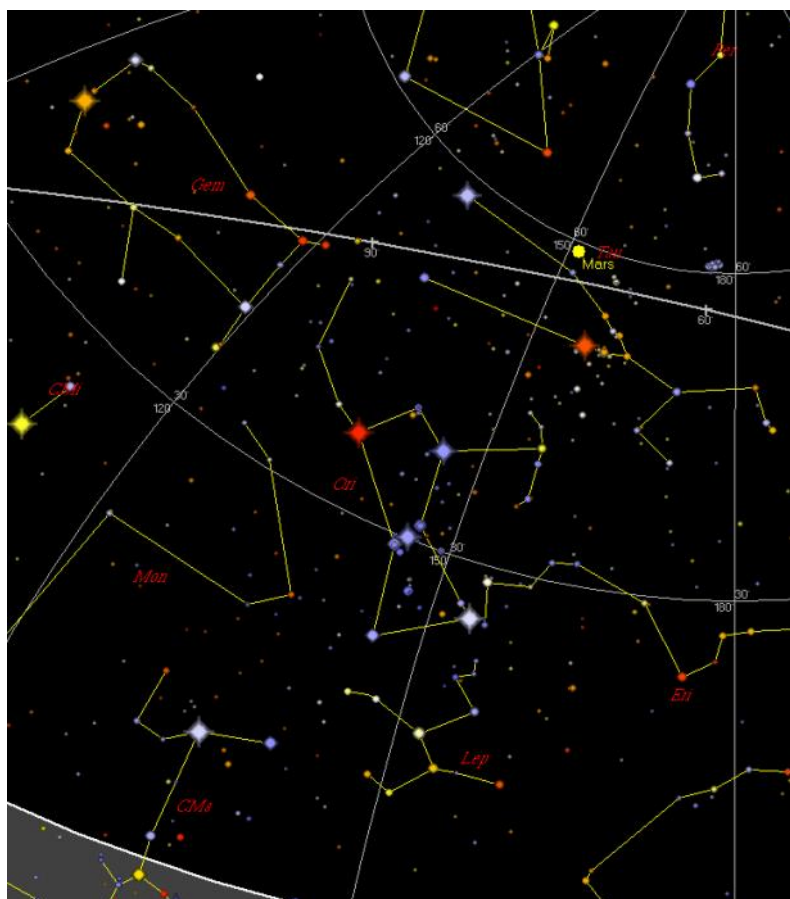
By mid-December from 9pm onwards the full array of the winter constellations (see map) is on display in the South East and South, this year complemented by Mars. Mars will be just above the brightest star in Taurus, Aldebaran, and they will be a similar orange colour.

Jupiter is still prominent through the evening in the South West.

Mercury and Venus may be seen in the last week or so of the month, quite close together, low down in the South West after sunset. It will require a clear horizon to see them. On Christmas Day the young crescent Moon will join the scene.

On the night of the 13th/14th December, the Geminid meteors reach their annual peak. This is currently the most active of the regular annual meteor showers but this month is affected by moonlight. Watching from early evening on the 13th and 14th once it is dark will give a window before the Moon rises.

Sky Watcher



RIVENHALL GARDENING CLUB

Club members met on Tuesday 8th November 2022, in Rivenhall village hall. Chairman, Mrs. Tracy Scott, gave out various notices and then introduced Ray How, our speaker for the evening. Ray is the Regional Representative for the Easton Region of the National Allotment Society and he reflected on his past year on the allotment. As gardens get smaller but we are encouraged to grow our own

produce demand for allotments is generally quite high. During the worst of Covid when everything had to shut down and people could not get together members 'met' on the website and it was just left for people to come and help themselves to whatever was available on the allotments. Ray pointed out that there is a great sense of companionship among the allotment fraternity. Allotment plots not only produce food and flowers but are a mix of insects, fungi and plants which also support pollination and are a refuge for wildlife. After the long and very hot summer it is important that as much water as possible is saved. Ray has seven water butts on his plot, however, when sowing seeds he uses tap water which is cleaner. He recommends Kings seeds which have a better germination than others. They are now developing seeds for a warmer climate. Ray answered questions from the audience and in answer to one — compost and manure as much as possible! An informative evening.

COMPETITION RESULTS

Horticultural

1st Karen Dakin 2nd Maurice Bacon 3rd Jack Dakin

Domestic

1st Jenny Claydon 2nd Karen Dakin 3rd Jack Dakin

Flower of the Month

1st Cyril Philpott 2nd Sue North 3rd Maurice Bacon

Photo of the Month

1st Karen Dakin 2nd Jenny Claydon 3rd Sue North

The Club's next meeting will be our Christmas Social Evening on Tuesday 13th December. There will be a Bring and Share buffet, a Tombola and a Fun Quiz. Competitions will be Horticultural — any vegetable. Domestic — 3 mince pies. Flower of the Month. Photograph of the Month. Entrance is £3 New members and visitors are always welcome. For further details please contact the Club Secretary on 01376 512781.



I Wonder how many of you can tell me where this statue of Byrhtnoth is located. It is in honour of a local, historical hero who led the English into battle against the Viking invasion.



Do you have a spare couple of hours one evening every month? Would you like to make a difference in the community for all? Have some ideas for local events or would just like to meet some more friendly faces then Rivenhall playing fields association needs you.

We are a small committee running the Rivenhall village hall, the hub of our village but we desperately need more members.

The hall is such an asset to our beautiful village and many events are held here and we would love there to be more for many years to come but with a shrinking committee it is challenging. You can make a difference with as little or as much time as you can offer.

Come along and meet us without commitment and see what we do we would love to meet you.

We fear that the village hall is under threat without more support to keep going and we would love it here for many more years hosting events for future generations and creating memories.



We welcome you to join us at our next AGM on:
Tuesday 24th January 7.30pm. Refreshments will be available.

Witham Mothers' Union
8th December in St. Nicolas church
hall at 2p.m.
Christmas Quiz and Entertainment by
Diane Clifford-Smith-
(an exotic dancer)
With 'A Bring and Share Tea.'
At this event there will be a Bring &
Buy table, in aid of 'English for
Women.'

BF The Break Fill Four

Claire, John and Rebecka on vocals; Tom on the keys

Where:
When:

St Francis Church, 7 for 7.30
Friday 16th December



No charge, optional raffle for charity!

Music from the sixties to the noughties and more!

Blondie, David Bowie, The Bangles, The Animals, The Beatles,
Abba, Elton John, The Monkees, Frank Sinatra, T-Rex, The
Sweet, Queen, Neil Diamond, Elvis Presley, The Proclaimers,
Jeff Beck, Dire Straits and many more, including some
Christmas songs!



Bring your own wine, beer, soft drinks and snacks

Seats are limited, let me know and I will reserve yours.

Email: tom.denton@btconnect.com
or text me on: 07855 493039



Organisations in Rivenhall

Clerk to Parish Council	Keith Taylor	516975
Email parishclerk@rivenhallparishcouncil.net	meets every first Tuesday	
End to End Nature Care	Simon Taylor	01621 810141
Gardening Club	Carole McCarthy	512781
Meets on 2nd Tuesday at 7.30pm in Village Hall		
Carpet Bowls	Mick Marshall	512836
Meets every Thursday at 7.30pm in Village Hall		
Playing Fields Association	Mick Marshall	01376 512836
Spread Your Wings Dance Acam	Laura Pearson	01376 741317

Facilities

Hire of Village Hall	email rivenhallvillagehall@gmail.com	
Hire of Henry Dixon Hall	Tracy Scott	571551
Oak Store Rivenhall "Open All Hour" Tel AJ		01376 538838

Organisations in Silver End

Clerk to Parish Council	Mrs B. M. Temple	618464
Email parishclerk@silverendparishcouncil.gov.uk		
Bowls Club	Paul Mann	07551 006906
Children's Centre	Faye Savage	587960
Neighbourhood Police	Braintree Policing Dial 101	
Congregational Church	Sharon Gray	583913
Friendship Club	Maureen Green	585275
Silver End Gad Abouts	Denise Sullens Smith	07952 992782
Gardening Club	Liz Woor	585586
Guiding Group	Carol Hutchings	07857 663959
Neighbourhood Watch	Judy Hill	07896 975839
Scouting Group	Elaine Hall on +44	7885 489788
St Mary's Church (R.C.)	Vivian Phillips	583598
Tennis Club	Jason Cairns	584581
Workers Educational Assoc.	Brian Gillion	583706
Luncheon Club	Helen Thomson	583255
Doctors Surgery		583387
Silver End Heritage Society	Jackie Nesbitt	07707 084608
Silver End United Football Club	Mark Edgell	584639 Web
Site www.silverendunitedfc.co.uk		
Women's Institute	Brenda Warnes	07931 548193
Community Warden	Jackie Windard	07785 515526
Post Office in Co-op - please note that it closes at Lunchtime 1-2pm		
Closes 1 pm Wednesday and 12.30 pm Saturday		
Library: Tues & Thurs - 2pm to 6pm Saturday 9am to 1pm		

HUNNABALL

Family Funeral Services



Here **whenever** you need us

Funerals | Memorials | Pre-paid Funeral Plans

Hunnaball of Witham

1 Coach House Way, Newland Street, Witham CM8 1YJ

01376 511592

www.hunnaball.co.uk

JANET C DAVIES

Lady Funeral Directors



**Our Ladies
in Hats**

*"funerals with
a gentle touch"*

Funerals | Memorials
Pre-paid Funeral Plans

Janet C Davies of Kelvedon

233 High Street, Kelvedon CO5 9JD

01376 573691

www.hunnaball.co.uk

DRH LANDSCAPES

Est. 1987

Quality Comes 1st

**Garden Landscape and Design – Hard Landscaping – Soft Landscaping
Grounds Maintenance for Private and Commercial Premises**

- Are you planning to redesign and landscape your garden?
- Does your garden just need a little TLC or a complete makeover?
- Are you looking for assistance with regular garden maintenance or perhaps a one-off visit to get things back in order?
- Is your lawn looking tired? Would you like a new replacement lawn or artificial lawn instead?

We are a family run business with over 30 years of experience working in the ever changing world of landscape management, business regulations and horticulture, with full public and employer liability insurance, as well as being a fully registered waste carrier with the Environmental Agency.



OFFICE: 01376 514142

We welcome...



EMAIL: info@drhlandscapes.com

www.drhlandscapes.com

Harcog Centre, 77-83 Maldon Road, Witham, Essex CM8 1HP

